



**1 Wetland Way OCEAN GROVE VIC**

4  2  2 

Indulge in the splendour of this architecturally designed double-story home, offering commanding elevated views overlooking serene wetlands. An esteemed retreat for any discerning family. A symphony of nature surrounds the home, complemented by native low-maintenance gardens equipped with an irrigation system. This home seamlessly blends practicality with allure, boasting a design that effortlessly integrates indoor and outdoor living spaces with a focus on family.

Inside, discover a generously proportioned layout featuring four bedrooms, two bathrooms, guest powder room and an enclosed office complete with built-in cupboards and cabinetry. Multiple living areas are split over two levels, with the lower living spaces flowing gracefully onto the tranquil decked alfresco, perfectly positioned to capture the northwest-oriented backyard. The master suite exudes

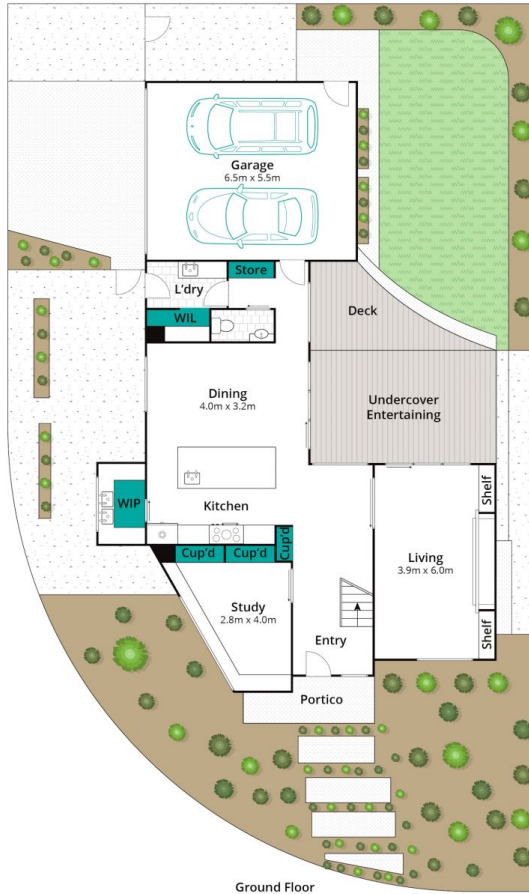
**Price** : \$1,170,000 - \$1,240,000  
**Land Size** : 462 sqm  
**View** : <https://www.oceangroverestate.com.au/sale/vic/geelong-district/ocean-grove/residential/house/7949386>



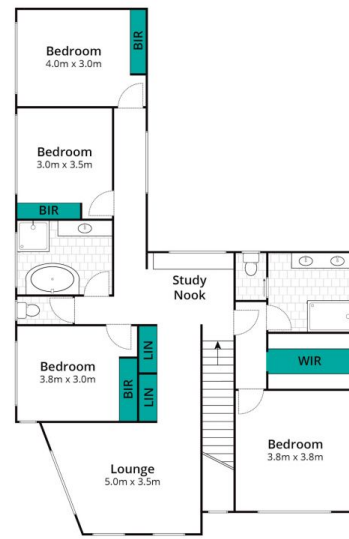
**Mark Blaskovic**  
0352550800



**Jacob Platt**  
0352550800



Ground Floor



First Floor

Whilst [bwrn.com.au](http://bwrn.com.au) has made every attempt to ensure the accuracy of the floor plan contained here, measurements are approximate and no responsibility is taken for any error, omission, or mis-statement. This plan is for illustrative purposes only.

# 1 Wetland Way, Ocean Grove

