



1 Lady Earl Crescent OCEAN GROVE VIC

3  2  2 

Introducing a stunning newly constructed coastal residence, designed to capture attention and exude architectural charm. This locally built home offers a range of possibilities, whether you seek an ideal downsizer, a lucrative investment opportunity, or a first-time homebuyer's dream.

Bathed in an abundance of natural sunlight, this north-facing dwelling embraces contemporary coastal living with its exquisite features. The interior showcases elegant timber flooring, raked ceilings, floor-to-ceiling curtains allowing sheer views, and double blinds for enhanced privacy.

The heart of the home lies in the captivating kitchen and open plan living area, a haven for entertainers. Adorned with a Caesarstone benchtop, a dishwasher, a walk-in

Price : \$ 840,000
Land Size : 492 sqm
View : <https://www.oceangroverestate.com.au/sale/vic/geelong-district/ocean-grove/residential/house/7576925>

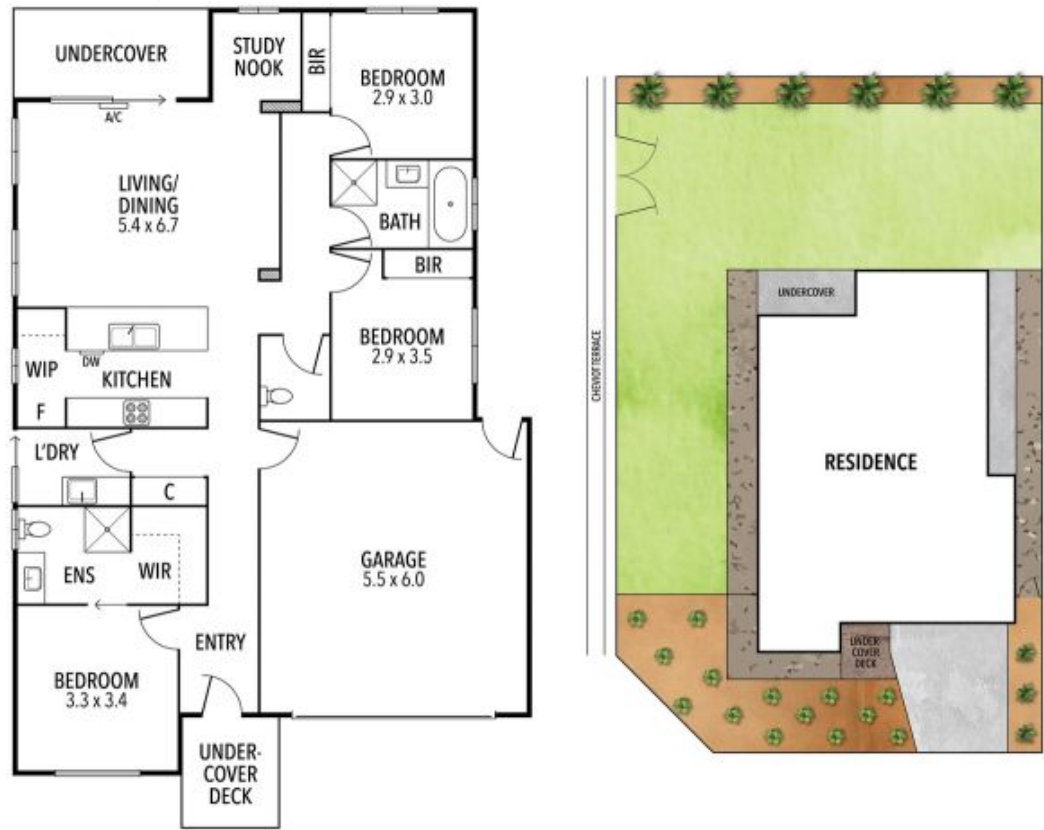


Mark Blaskovic
03 5255 0800



Jacob Platt
03 5255 0800

1 Lady Earl Cres, Ocean Grove



THE ABOVE PLAN IS AN ARTIST'S IMPRESSION ONLY, IT INCLUDES ELEMENTS THAT ARE FOR DISPLAY PURPOSES ONLY AND MAY NOT BE TO SCALE. LANDSCAPING SHOWN IS INDICATIVE ONLY. DIMENSIONS ARE APPROXIMATE.

