



4 Lutana Court PORTARLINGTON VIC

3  1  2 

Looking for a new project to sink your teeth into? This property might just be what you're looking for. With three bedrooms, one bathroom, a spacious lounge, separate dining/family room, large kitchen, laundry, and a double lockup shed, this home is full of potential and waiting for you to make it your own.

Set on a generous 578m² (approx.) block, this coastal gem offers more than just ample space for a renovation project or rebuilding from scratch. It also boasts stunning views of the bay and You Yangs, making it the perfect place to relax and take in the natural beauty of the area.

The location is another significant drawcard for this property, just 1km (approx.) from the sparkling Portarlington beaches and the main shopping hub. The Bellarine Peninsula is also home to some of the best

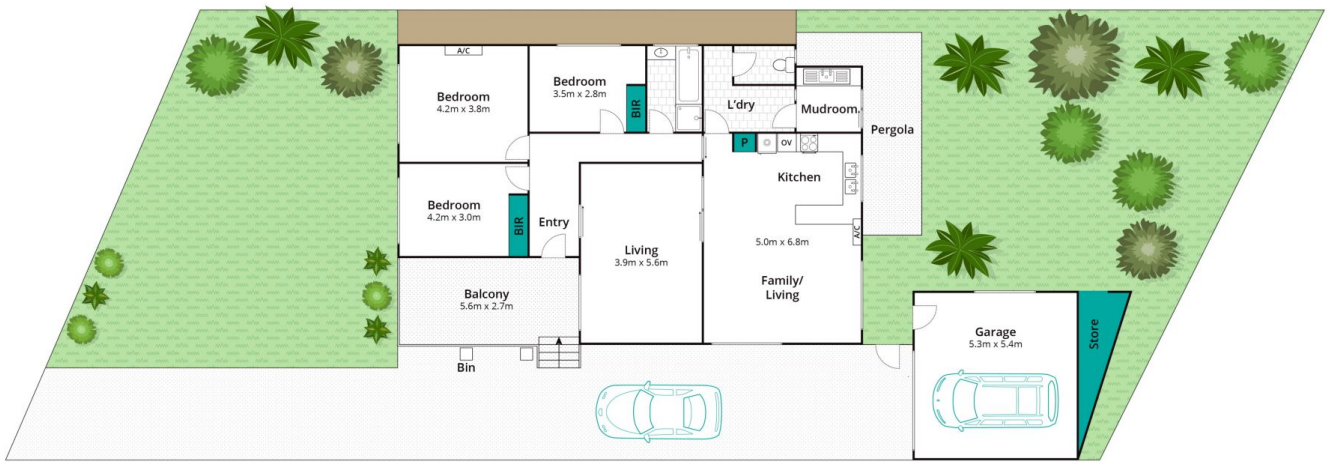
Price : \$700,000 - \$760,000
Land Size : 578 sqm
View : <https://www.oceangroverestate.com.au/sale/vic/geelong-district/portarlington/residential/house/7449774>



Jacob Platt
03 5255 0800



Mark Blaskovic
03 5255 0800



Whilst bwrn.com.au has made every attempt to ensure the accuracy of the floor plan contained here, measurements are approximate and no responsibility is taken for any error, omission, or mis-statement. This plan is for illustrative purposes only.

4 Lutana Court, Portarlington

