



83A Duneview Drive OCEAN GROVE VIC

3  **2**  **2** 

Crafted effortlessly to bring together style, sophistication and ease of living comes this custom townhouse ready for its new owners. Positioned privately off the street, you are greeted with a striking façade featuring spotted gum timber cladding and James Hardie linea panelling.

Designed by local architect Hyatt Veenstra Architects comprising of three spacious bedrooms with the master featuring floor to ceiling sheers and an ensuite to impress with a skylight, stone top benches and frameless shower.

The Kitchen is an entertainer's dream, with the latest 900mm appliances, plenty of soft closing cabinetry and a servery window out to the under cover alfresco. For all year comfort there is a split system to the main living and ceiling fans to all bedrooms. The main living is soaked in natural light thanks to the raked ceiling and highlight windows with motorised blackout blinds.

Price : \$ 870,000

View : <https://www.oceangroverestate.com.au/sale/vic/geelong-district/ocean-grove/residential/townhouse/7380390>

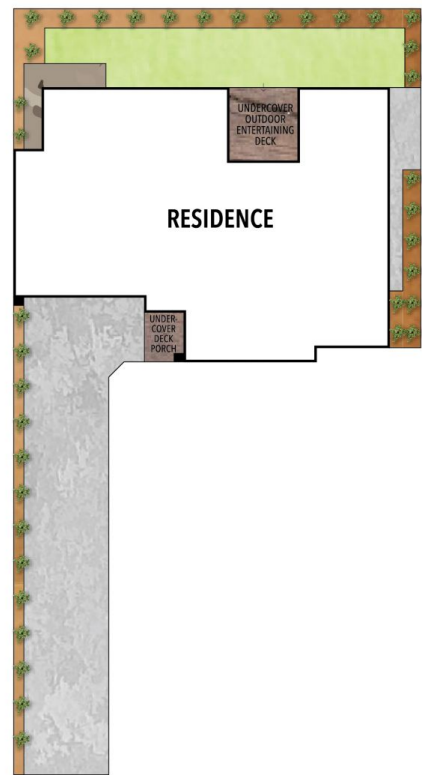
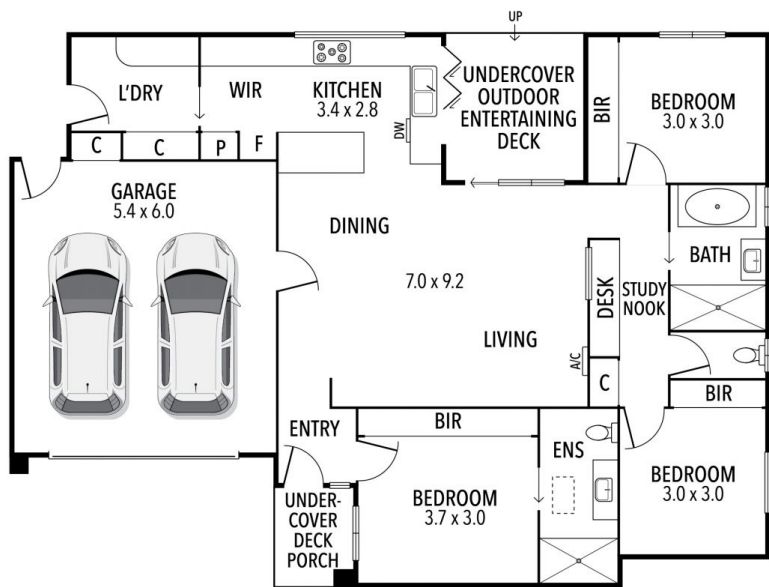


Jacob Platt
03 5255 0800



Mark Blaskovic
03 5255 0800

83A Duneview Drive, Ocean Grove



THE ABOVE PLAN IS AN ARTIST'S IMPRESSION ONLY, IT INCLUDES ELEMENTS THAT ARE FOR DISPLAY PURPOSES ONLY AND MAY NOT BE TO SCALE.
LANDSCAPING SHOWN IS INDICATIVE ONLY. DIMENSIONS ARE APPROXIMATE.