



11 Limestone Way OCEAN GROVE VIC

3  2  2 

With unparalleled quality and excellence comes this custom-built home ready for its new owners. The striking façade captures your attention on arrival, architecturally designed with solid recycled red brick double garage, CSR Cemintel barestone sheeting, James Hardie axon panelling finished with Blackbutt cladding to the eaves.

Price : \$ 1,225,000
Land Size : 425 sqm
View : <https://www.oceangroverestate.com.au/sale/vic/geelong-district/ocean-grove/residential/house/7175365>

Upon entering you're greeted by salt and pepper polished concrete flooring with sweeping 3.8m raked ceilings. The main living/ kitchen area is bathed in natural light with floor to ceiling sheers, the kitchen boasts an integrated Electrolux dishwasher and cook top with Westinghouse oven and built-in microwave oven. Summer entertaining will be seamless with large double glazed stacker doors from the kitchen area opening directly to the huge Hybrideck composite decking.

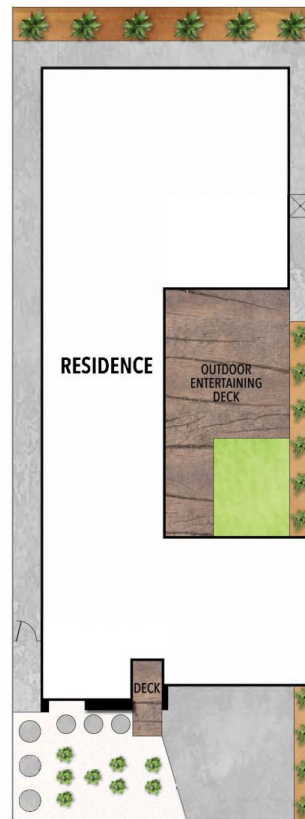
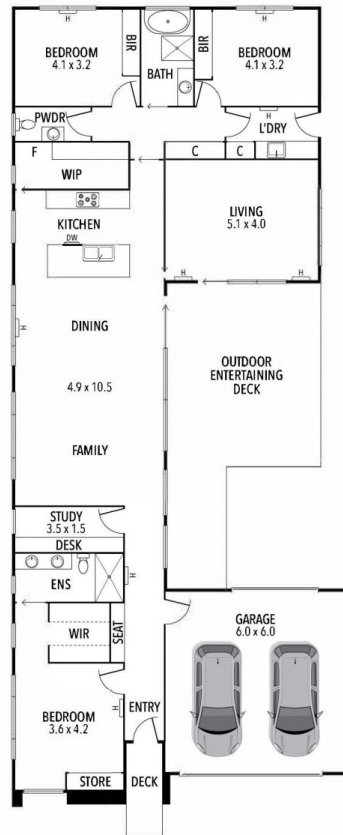


Jacob Platt
03 5255 0800



Mark Blaskovic
03 5255 0800

11 Limestone Way, Ocean Grove



THE ABOVE PLAN IS AN ARTIST'S IMPRESSION ONLY, IT INCLUDES ELEMENTS THAT ARE FOR DISPLAY PURPOSES ONLY AND MAY NOT BE TO SCALE. LANDSCAPING SHOWN IS INDICATIVE ONLY. DIMENSIONS ARE APPROXIMATE.